

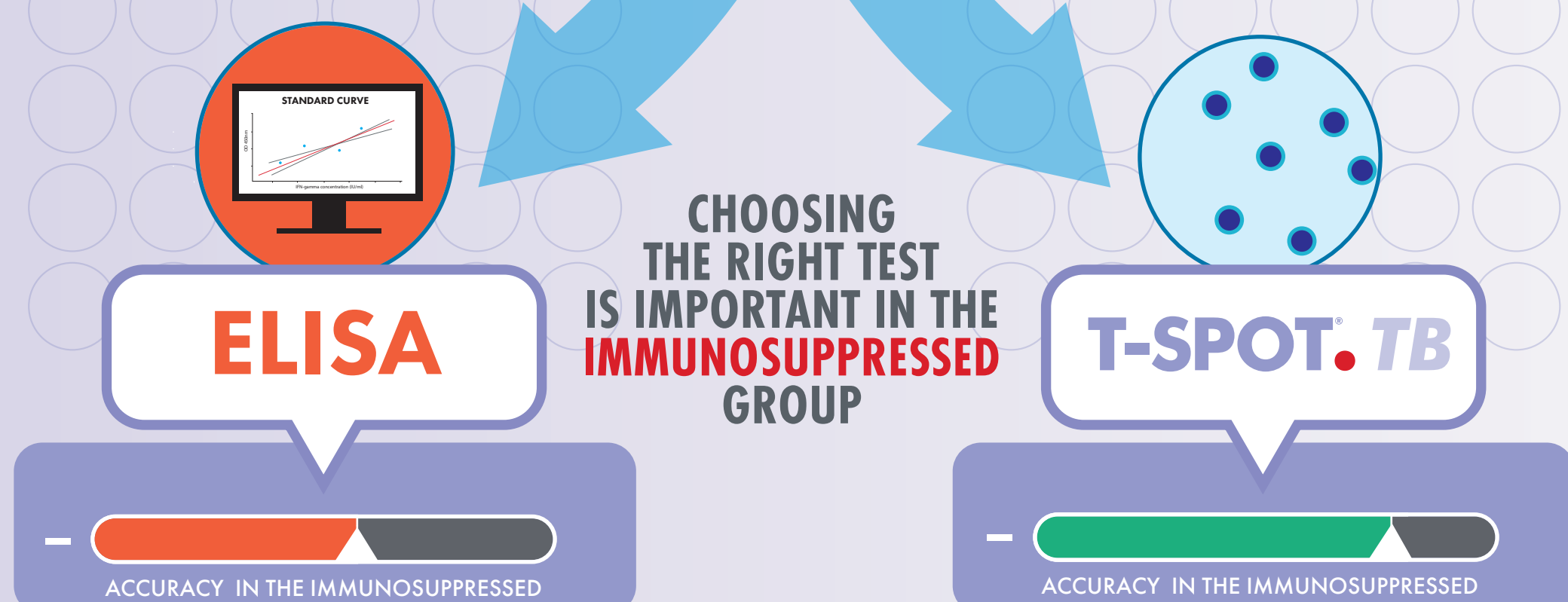
STOP MISSING **TB** IN THE IMMUNOSUPPRESSED

WHO ARE THE IMMUNOSUPPRESSED?

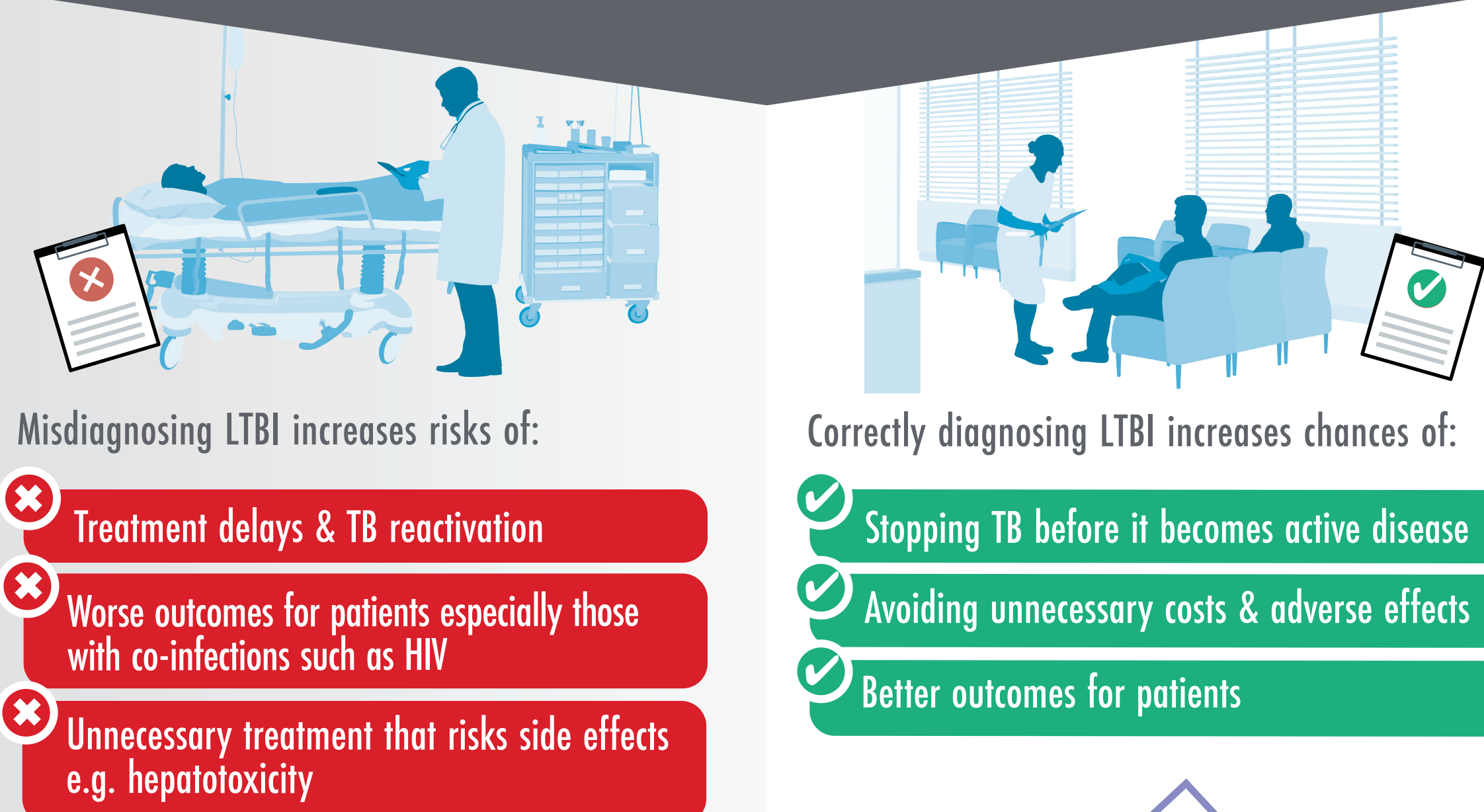


RECOMMENDED TEST OPTIONS

ELISA and ELISPOT



OUTCOMES IN THE IMMUNOSUPPRESSED



T-SPOT.TB
is more accurate*



*Meta analysis showed: Results of the T-SPOT.TB test in those receiving immunosuppressant drugs were not significantly different from those not receiving these drugs (p= 0.18). ELISA results were significantly different (p= 0.001). The likelihood that immunosuppressive therapy affected IGRA results was lower for T-SPOT.TB [odds ratio 0.81 (95% CI 0.59-1.10)], than ELISA [odds ratio 0.65 (95% CI 0.50-0.84)]. (Sunny H Wong, Qinyan Gao, Kelvin K F et al. Effect of immunosuppressive therapy on interferon γ release assay for latent tuberculosis screening in patients with autoimmune diseases: a systematic review and meta-analysis Thorax 2016;71:64-72)